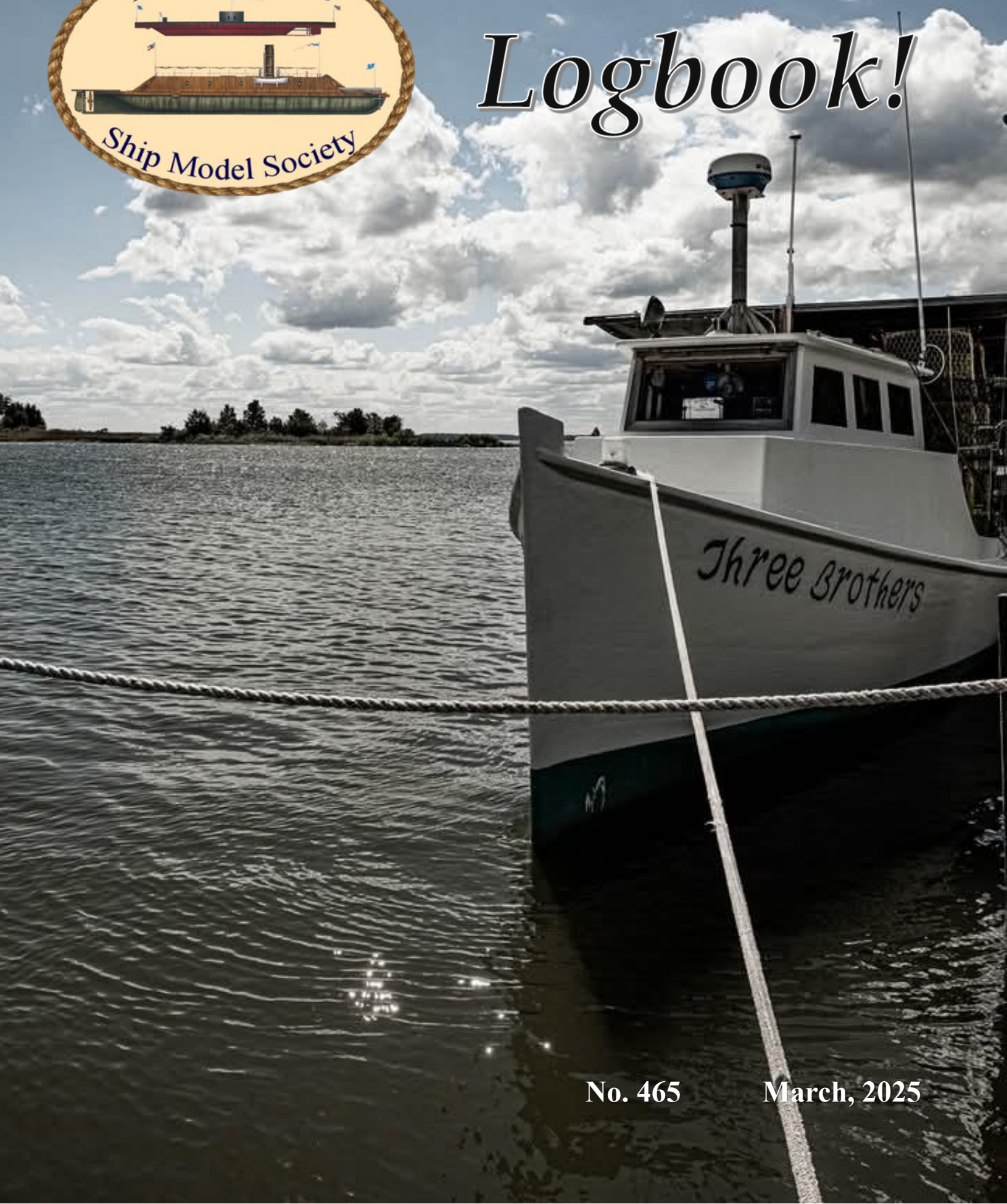




Logbook!



No. 465

March, 2025

Hampton Roads Ship Model Society

No. 465

WWW.HRSMS.ORG

March, 2025

View From The Bridge



Meeting Notice

The meeting will take place
at 10:00 hours

March 8, 2025



Captain's Log 3.8.25

Members of the HRSMS participated in the recent Old Dominion Open show in Richmond. Congratulations to Dave Chelmo, Ulrich Guenther....and me for entering their models and receiving accolades and accompanying trophies for excellent work. I sense a pattern here. Dave and Ulrich placed First and Second in the wood-built category and I was awarded First in 1/350 and larger category. Also won and Best Maritime model. To all the volunteers who helped with the judging, thank you.



The O.D.O. is just the opening act for the main event later this summer in August. Get to work and enter your pride and joy in the IPMS Nationals. Entering and winning in Richmond does not preclude your eligibility to enter the Nationals in Hampton.

"We" came, "We" saw, "We" conquered! "**vel gerō**".

This Saturday there will be our auction. Don't forget your checkbook and cash. I hope you find what you need. We went "raiding" to Roanoke recently to bring home the salt pork. Enjoy the feast! —SD



On to Hampton...

Letters to the Editor



No mail this month. Instead we will use this space to hawk an interesting product presented by Craig Moore. You can find this at Amazon.

Sports & Outdoors > Outdoor Recreation > Camping & Hiking > Lights & Lanterns > Headlamps



Roll over image to zoom in



3.5X 420mm Surgical Binocular Loupes Head Light Blue Aluminum Box Magnifiers by NNSKI (Black)

Brand: NNSKI

\$37⁹⁹

FREE Returns

Apply now and get a \$10 Amazon Gift Card upon approval of the Amazon Store Card, or see if you pre-qualify with no impact to your credit bureau score.

Available at a lower price from [other sellers](#) that may not offer free Prime shipping.

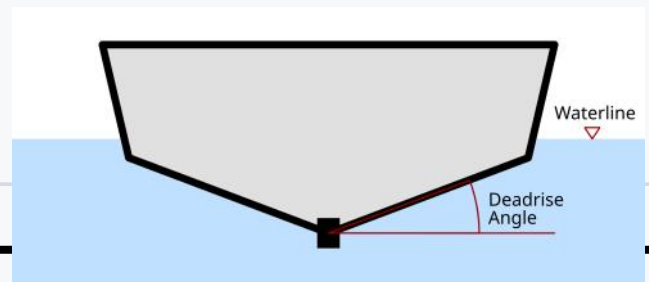
Brand	NNSKI
Color	Blue,black
Batteries Required?	No
Lens Material	Glass
Magnification Strength	3.5 x

Report an issue with this product or seller



2-Pack Rechargeable Headlamp, LED Waterproof Headlight, 2...
4.6 ★★★★★ 378
\$19⁴⁹ ✓prime
Save 12% with coupon

Sponsored



March Cover:

This month's cover pays homage to the Chesapeake Bay and the watermen and boats that make their living there. This uncredited image shows the beauty of the deadrise type of watercraft. It is the official boat of the Commonwealth of Virginia. These uniquely shaped vessels work the waters of the Chesapeake Bay and local Rivers year round harvesting crabs, oysters, fish, and eels. They can be identified by their sharp bow, hard chine, and a bottom that goes from that sharp bow transitioning through a decreasing deadrise, in a flat V shape, until you reach a flat bottom at the stern. They also feature a small cabin structure forward and a large open work area aft.—Ed.

The Jape



Scuttlebutt



“Isn’t Plymouth really cold? What about the Bahamas?”

Nautical term for February

Grounding: An embarrassing situation in which a sailor returns to shore without leaving his boat.

—Tim.

Grounding, it’s a noun or an adjective depending on its use in a sentence or conversation. In its many variations, the word may or may not be such a nice thing to encounter. For sailors, it’s the obvious. For some people it may be the rock that focuses or balances their life. For little kids, it’s a world ending loss of freedom accompanied by a total stoppage of time because they have not developed a sense of patience. For the airlines, it means the plane ain’t taking off anytime soon. For things employing electricity, it could be a matter of life or death—you don’t want to be in the circuit. For those who are inquisitive, it is basic training in a subject providing a solid foundation for further study.

Sailors have it so hard...



Minutes



Meeting 2-8-25

The meeting was called to order at 10:05 by the skipper. There were 25 members present, 7 via Zoom, and four guests: Craig Moore, Mark Ballin, Wayne Richard, and Kurt Van Dam on Zoom from Chicago.



Gene reported that Cabin Fever was good this year and urged attendance next year. He also noted that the SS United States is still in Philly due to red tape.

There were no corrections to last month's minutes.

Ryland Craze announced that 2025 dues of \$24 are now due, and explained payment options. He also said that the IPMS acknowledged our donation of the battleship Mikasa for raffling at the ODO on February 22nd. He reported no income or expenses for the month, leaving us with a balance of roughly \$XXXX.



Greg Harrington reported that he has added several books to the website.



OLD BUSINESS

John Cheevers discussed the upcoming auction for next month.



Attendance at the ODO later this month in Richmond was urged.

The Clerk cast one vote for the slate of officers nominated last month, duly railroading them for another term.



NEW BUSINESS

Joshua Fichmann announced that the annual ModelCon will be held on the battleship New Jersey on August 2nd, with models to be displayed only in the wardroom. He urged participation; details will be available in the Philly newsletter.

Tom Ruggiero reminded everyone that the Northeast Joint Shipmodel Conference will be held Saturday, April 26th in New London, Connecticut.

Presentation:

Ron Lewis' presentation was again postponed because we had run out of time. It is tentatively scheduled for April and will run before the business meeting.

The meeting adjourned about noon.

Show and Tell

Ulrich Guenther showed his Corel model of the Berlin, a Dutch pinnacle. (see ODO page)

Josh Fichmann showed two Vanguard launches for use his Prince de Neufchatel.

Mike Pelland showed his shop/garage and English longboat.

Kurt Van Dam discussed submarines built in Manitowoc and the building of a model of a floating drydock.

Tom Ruggiero discussed the restoring of three models.

Greg Harrington showed progress on the hull of his Danish eeler.

John Wyld showed a new plastic cement and a WWII drydock model.

John Cheevers showed progress on his revenue cutter, and the dories to be carried on deck.

John Jones showed small hand-carved ducks that are provided to veterans' support centers to be handed out to veterans suffering from PTSD as anti-suicide support items. He asked for help in carving additional ducks, which he hopes to provide in the hundreds to other organizations. Please contact him if you can help or know of others who can. jjusnret@verizon.net.



Don Good showed a model of a Chesapeake pile driver.

Craig Moore showed dentist loupes which can be used as convenient magnifiers. They are a reasonable price. (see product add in Letters to Ed.)

John Proudley showed his Blue Jacket model of the Jeremiah O'Brien.



Stewart Winn showed progress on his model of a 1938 Chris-Craft speedboat.

Caelen McCormick showed his model of the Constitution, a long boat, an ancient Dapper Tom kit from Model Shipways, and a walking-beam engine formerly on display in the Taco Stand.

Al Sutton showed a Dean's Marine model of a WWII British trawler and fishing vessel which he is building for R/C.



Gene Berger showed progress on the USS Zircon, and how he had copied the deck plans on clear acetate so they could be overlaid to mimic a 3D image.



Mystery Photo

If you know the answer, contact John Cheevers by mail, text, or Email

If you know the answer to the Mystery Photo below, by all means send it in. All replies will be blended into the solution.

Also, If you have a photograph that asks these questions: who, what, when, where, and why, send it on to the Logbook editor for consideration as a future Mystery Photo. Do not send an explanation with the photograph as I like to play the game too. After it is published in the Logbook, you can send in your explanation for inclusion in the defining essay.—Ed.

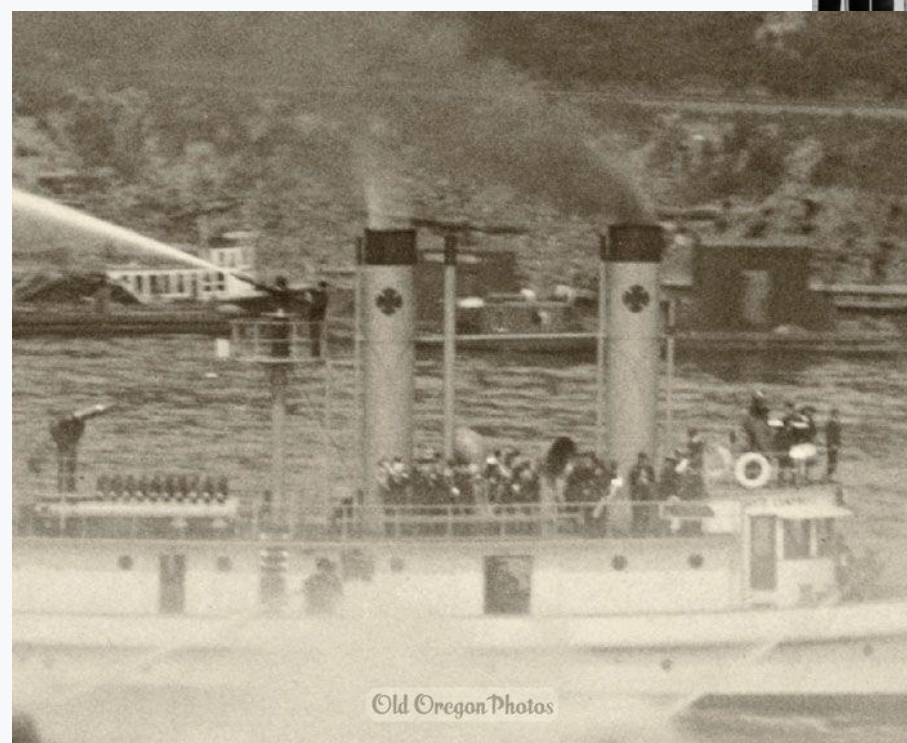


Books for the Ship Modeler
www.seawatchbooks.com

Mystery Photo Explained

Here we have a rather dapper fellow standing cross armed in front of a very odd looking cannon of some sort. The image didn't fool one of our readers. He said that the photograph was an image of a fireboat; and he's exactly right. This image was chosen as the Mystery Photo because it reveals another avenue open to the scratch ship model maker.

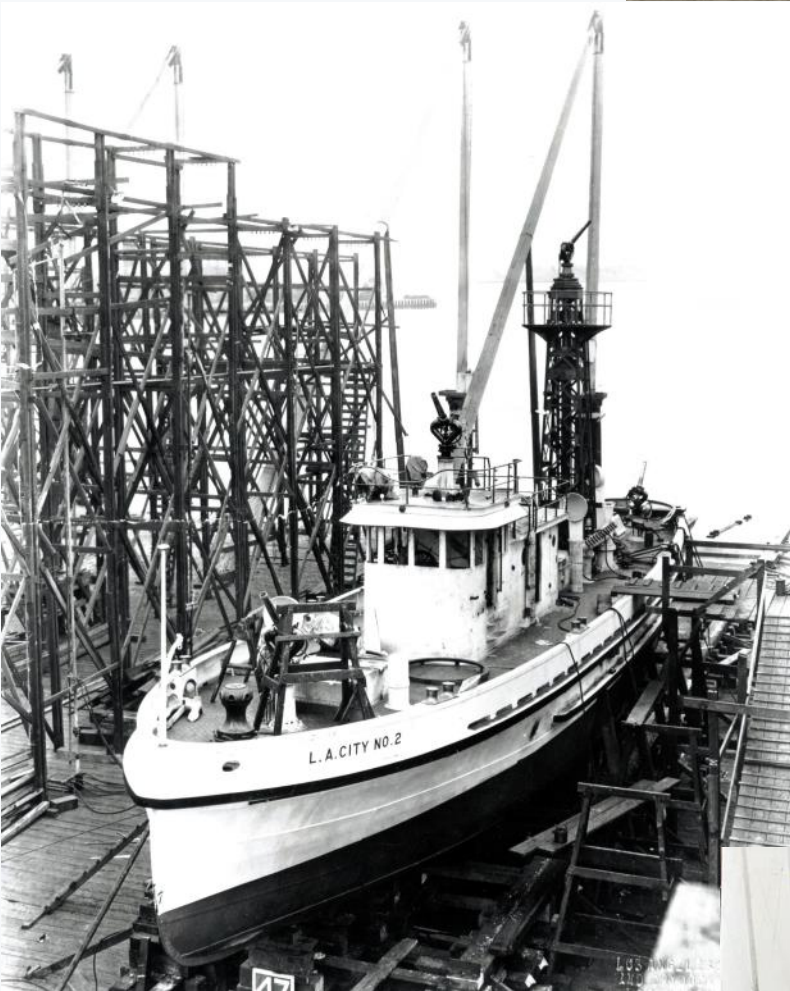
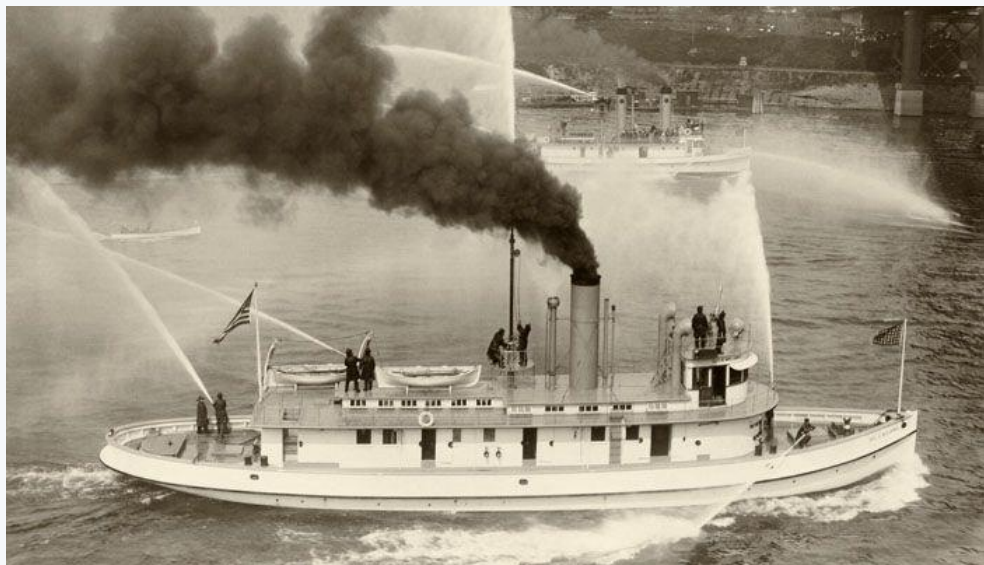
The ship in the photograph is the City of Portland, Oregon's fireboat George H. Williams. It was built in 1904 by Willamette Iron and Steel Works. It is wooden hulled and is powered by steam. It was in service from 1904 to January of 1928. The photograph is dated 1914 and shows off the massive manifold and new fire monitor, and a new tower that you see behind the fireman. These changes came from her refitting and modification in 1910. At 105'-6" in length, the vessel is just the right size to model. It would be a nice challenge to build.



In addition to George H. Williams, I have provided a selection of other fireboats, on the next page, that might spark your modeling interest. They would make excellent modeling candidates if you wanted to spend the time doing research for scale or kit-bashing just for the fun of it:



City of Portland fireboat, David Campbell. Built in 1912 she has the classic tugboat profile. The 125' vessel was steam powered, and "built in Michigan, disassembled, shipped in pieces, and reassembled in Portland."

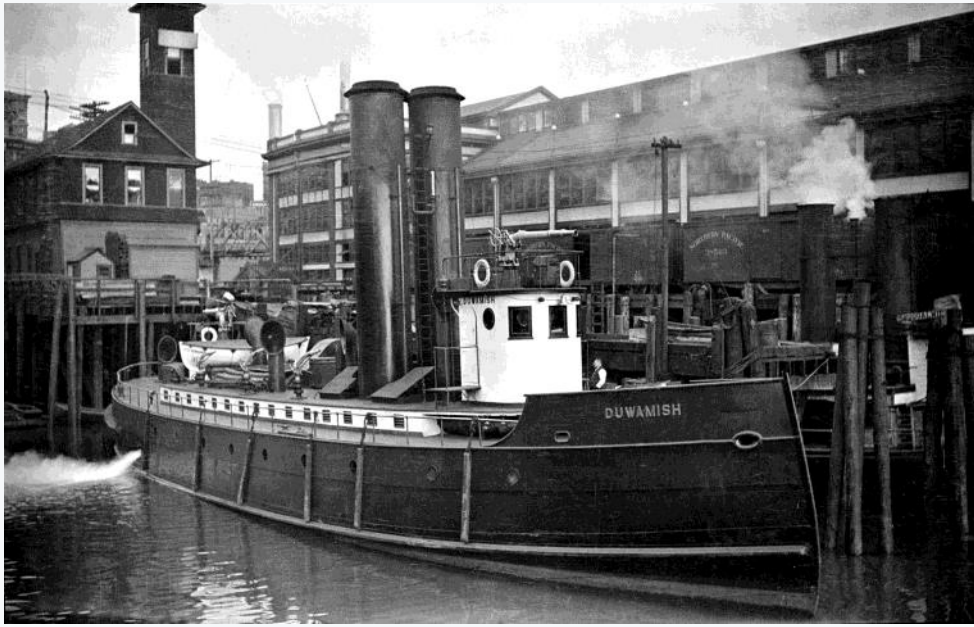


Something that couldn't be used last month to fight the calamity and monstrous conflagration in Los Angeles is L.A. City No. 2. It was built in 1925 at the Los Angeles Shipbuilding and Drydock Corp and was housed in their iconic fire station 112 on Terminal Island. The unique thing about this boat is the triple screw arrangement.

And if you like, J.H. Carlisle is a fireboat for the city of Vancouver. Built in 1928 it has a steel hull and powered by several gasoline engines.



City of Seattle had a uniquely styled fireboat at their disposal. Duwamish had a very old style bow and dual stack arrangement. Built in 1909 it had “double vertical compound steam engines.” Its length was 120 feet. The ship is currently a museum and now sports a somewhat more traditional bow.



John J. Harvey served the City of New York and surrounding waters. It is categorized as one of the most powerful fireboats ever built. It was built in 1931 by Todd Shipbuilding and is 130 feet in length.

Here is a Seattle based one just named Fireboat, note the fancy hatch. Actually its name was Snoqualmie, the photo is circa 1900. It was built in 1891, was 98 feet long, and wooden hulled. Depending on your set of jaw, her 1909 rebuild adding a new superstructure and a pair of smoke stacks may or may not have ruined her appearance..



The Auction

These items are on offer at this auction. They are too large or heavy to bring to the event, so you get to see them and read their description here. Please note the suggested opening bid. Also there will a lot of smalls on offer, on site at the museum. Bring lots of cash!

Right: Wood carver's bench with storage below and two wood vises. The wood is hard and looks exotic. Appears to be made by Kity tools. Gloss finish. 60 x 20.5 x 34.5 . Opening bid—\$150.00



Below: Jeweler's/Watchmaker's work bench, 48 x 20 x 36. The perfect ship modeling center, it has 8 drawers and a cabinet. Opening bid—\$50.00



Above: Two, count them, two stacked, wooden tool chests. Not Gershners, but they appear to be the type you can buy from Grizzly tools. Good condition although the top chest on the right is missing a drawer pull. Opening bid for each—\$150.00.



Below: Adjustable leg work table. Legs are metal, top is nicely finished wood. Excellent condition. L48 x W24 x H28.5 and up. Opening bid—\$50.00



Left: A Carver's Bench originally offered by Veritas through Lee Valley tools. No longer available. Heavy cast iron legs, tilting top with bench pins. Table is 24 x 24. Very nice. Opening bid—150.00.



Right: we have a portable drafting table with collapsible legs. Good condition. 42 x 30. Opening bid—\$25.00.



Below: A Craftsman stackable, metal mechanics tool chest and cabinet. All drawers have glides with bearings. Chest - L x W. Base - 27 x 18 x 60. Very good condition. Opening bid—\$150.00'



Right: Craftsman mechanics tool chest - 26 x 16 x 20. All drawers have glides with bearings. Opening bid—\$50.00

Right: Wooden work table. Billed as a drafting table, the surface might be too rough to draw on but it would make an excellent modeling table. Clear patternmaker's pine XX thick. Some repair necessary. 60 x 28. Opening bid—\$5.00



Right: Metal office credenza, apparently liberated from a Crestar bank...or bought at auction—who knows. Excellent surface for your modeling tools, etc. and good storage. As shown, very good condition. 60 x 18 x 30. Opening bid—\$25.00



Left: Sherline 5000 Mill with DRO. This is a 10" mill that comes with a hoard of accessories. Including a rotary table, an indexing attachment, tooling plates, a sensitive drilling attachment, and more. Huge value with an Opening bid—\$500.00



Right: Unimat 3 lathe with mill column and work light. Comes with 3 and 4 jaw chucks, live and dead centers, drill chucks, tapering attachment and more. Also there are the table saw and jig attachments. Opening Bid—\$300.00



Note: Any large items that are not sold at auction will be liquidated by other means

Some Auction Smalls

Just a listing of some of the smaller items that will be on offer at the auction. Use this to help plan your bid strategy!

- Kreig pocket hole screw system.
- Microlux scroll saw with variable speed foot pedal.
I smell ozone when it runs
- Dremel scroll saw and table.
- 2-1/2" drill press vise
- Small metal Craftsman tool box silver gray
- Miter rite miter box
- Black and decker tools and power supply—high speed detailing tool, sander
- Black and decker tools and power supply—sander
- Foredom tool (polishing center with foot pedal speed control
- Proxxon cutoff saw on one drawer cabinet base
- Harbor Freight cutoff saw
- Versa tool wood burner
- Rotary paint spray stand
- Kit: Artesania Latina Swift unstarted
- Kit: Artesania Latina Swift unstarted
- Ryobi power chisel with case
- 24" Pro Smart level
- 2—Jorgenson style wood clamps
- Kit: Model Shipways Emma C. Berry unstarted
- Shop/ task light
- Tube of copper rods
- Tube of Aluminum rods (hardware store aluminum)
- Hex key set, long, English and metric
- Milwaukee drill and reciprocating saw blades
- Sand blasting gun
- 9 Double sided storage boxes with hardware (screws, nuts, etc.) price per each
- Invisible nailing kit
- Set of Disston abraders
- Bench vise with 2 heads
- DMT diamond sharpening plates in case
- Bergeon swiss micro chisels (or screwdrivers) with sharpening guide
- Silquar rotating solder board
- Cen-tech 6" digital caliper
- Dockyard micro chisels with sharpening aids
- Carpenters wood tool caddy
- 24" Vernier caliper

Club gear:

If you need a shirt, hat, or name badge, be sure to see either Ryland Craze or Tim Wood. They have all the details on what's available; pricing and so forth. And I will say that most of the gear comes with our embroidered logo

Or you can search the website for info. Simply type "hat" in the search window...



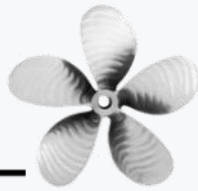
Oh, Oh, ODO...2025

Hail, hail, the gang was all therealmost.

Here are some pics of the 2025 Old Dominion Open ship model show, contest, and expo hosted by the Richmond chapter of the IPMS. HRSMS had a nice display table and we and others brought some nice models to judge.



What's Happening at The Museum



March 2025

March. It's here and has, fortunately, come in like a lamb. Does that bode well for the later exit of our Spring month (in like a lamb, out like a lion)? Only time will tell! Several reliable sources are calling for cool temps and rain. But what do we have to look forward to this month? Well, there's always our Battle of Hampton Roads weekend which, unfortunately, is a



one-day event this year and it occurs during our auction meeting. Alas. But the calendar also offers a tip o' the paddy cap to our Irish brethren on the 17th. Now, how about Ireland? What about the Emerald Isle might be of interest in a maritime way? Remember that unsinkable ship that sank in 1912? She was built at Harland and Wolff shipyard, still doing business in Belfast, Ireland, although not building ships such as those of the early 20th century. Aside from the famous unsinkable ship not a whole lot of attention is focused on Irish vessels. Let me offer a few ideas. You probably know that four large liners were built as the Olympic class for White Star. They were,

essentially, British ships. But many other vessels were also built there. And at other dockyards, several sailing and motor ships were built. Some gained fame or infamy but you won't easily find plans or model kits for these. Test your detective skills to find info.

Here's one of my favorites. It's named *Asgard*. And here's another, a barque that has been reproduced at Kerry, Ireland and is now an active museum recalling the great famine of the 1840's. Her name is *Jeane Johnston*. Now, so as not to leave *Titanic* behind, let me introduce you to *RMS Tayleur*, often referred to as the Irish Titanic. She was an iron-hulled clipper ship and, while she was not built in Ireland, her sad story recalls her striking at Lambay Island, just off Dublin, on her first voyage. The year was 1854 and she was

considered a very modern, large and technically advanced ship. Fewer than half of her 650 passengers survived. Now, if you're



looking for an unusual vessel to miniaturize and scratch-build to scale, this is just a starting point. I'm always fascinated with the history of the ships as much as the building of scale reproductions. By the way, check in with the Museum regularly and you'll see new info on programs and events that will hopefully entertain and inform you. The theater, for example, is

featuring new videos on a rotating schedule that show what's happening in collections and conservation. Just log in to marinersmuseum.org and take your choice!

Ron



Time for



I chose this drink because it sounded good...

Peach Schnapps Cocktail

INGREDIENTS:

- 1 cup of ice
- 1 cup of fresh orange juice (pulp free)
- 1½ ounces of peach schnapps liqueur
- 1 ounce of silver (clear) rum
- 1 ounce of LITE (50% sugar) cranberry juice cocktail

Note: I use a LITE, or 50% less sugar, cranberry juice cocktail when adding it as a splash on the top of my cocktails. The lower sugar amount allows it to "sit" on top of the other layers. The higher the sugar content in liquids makes them sink to the bottom of the glass, even if other "lower-sugar" layers are already in the glass.

Instructions:

- Fill a lowball (12-ounce capacity) cocktail glass with ice cubes (approximately 1 cup).
- To the ice-filled glass, layer in the orange juice, peach schnapps, and silver rum.
- Top it with the cranberry juice cocktail. Be sure to pour slowly to create a slightly layered look for your drink.
- Garnish the rim of your glass with a fresh peach slice.



Mess Call



It's March and we can't wait for the warmer weather. To get your mind "right" try cooking these great little **White Castle sliders**. If you love a juicy cheeseburger, these copycat White Castle Sliders will be on your menu frequently the next time you have a craving. Using the clever technique that the restaurants made famous, you can create their original slider with beef patties, cheese, and a dill pickle slice on a signature bun.

Ingredients:

- 1 pound of lean ground beef
- 1 tablespoon of beef bouillon powder
- 1/4 teaspoon of garlic powder
- 1 cup of yellow onion, finely chopped
- 1/4 cup of water
- 1/8 teaspoon of salt
- 1/8 teaspoon of ground black pepper
- 12 dinner rolls, cut in half
- 10-12 Kraft American Cheese Slices, cut each slice into 4 squares
- 20-24 dill pickle chips
- Ketchup and mustard (optional)

PREP TIME 15minutes minutes

COOK TIME 13minutes minutes

TOTAL TIME 3hours 28minutes minutes

SERVINGS 12 sliders

Instructions:

- In a large bowl, add the ground beef, beef bouillon, and garlic powder. Mix together with until combined.
- Line a 9x13-inch baking sheet with parchment paper. Add the ground beef mixture and spread to the sides until it forms a flat even layer. Using a knife, cut into 12 equal squares of 3x4-inches or about the same size as the dinner rolls. Using the end of the spoon, create 5 holes in each patty.
- Place the ground beef baking sheet in the freezer for 3 hours.

Recipe continues on next page....



White Castle Sliders (Cont.)

Preheat the oven to 450°F. Remove the ground beef baking sheet from the freezer and break the patties apart. Throw away the parchment paper.

Add the onions to the bottom of the baking sheet and spread evenly. Add ¼ cup of water to the onions. Place the frozen beef patties directly on top of the onions and water. Sprinkle the ground beef with salt and pepper and then place the baking sheet in the oven and allow the beef to steam cook for 10 minutes.

Take the baking sheet out of the oven and place the bottom of each dinner roll on a hamburger patty. Place the tops of the dinner rolls in a staggered pattern over the bottom pieces of the dinner rolls.

Place the baking sheet back in the oven and let cook for 3 minutes.

Take the baking sheet back out of the oven and use a spatula to scoop up each meat patty with onions and bottom bun at-

tached, and add 3 cheese slices to each slider.

Add optional condiments: dill pickle chips, ketchup, mustard.

Place the top bun on the condiments and serve sliders immediately.

Notes

Don't skip the step of making the holes in the patties. They have holes in them because they are steamed and not fried. This keeps them juicy and means the onions spread better.

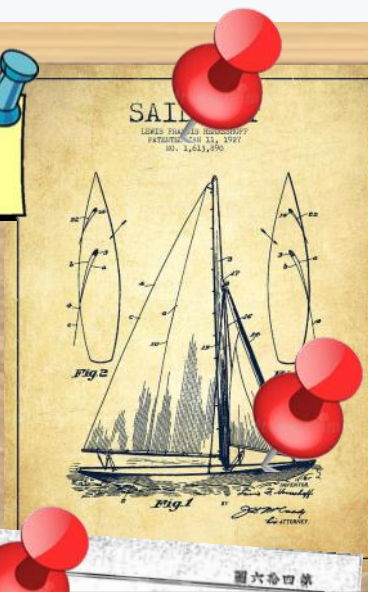
When you add the dinner rolls, make sure they don't touch the water, or they will absorb it and become soggy.

To reheat your sliders place them in the microwave with a damp sheet of paper towel on a microwave-safe plate and cook on half power for around 1 minute 20 seconds for 2 sliders or until hot.

Going, going, gone! Lets take a few moments to say good-bye to a great lady of the sea. The S.S. United States departed Philadelphia under tow on 19 February, 2025,, bound for the gulf coast of Florida to become a reef. She will live on providing a habitat for fish and sea creatures and as a sport diving attraction.—Ed.



The Bulletin Board



Merchandise is here and up on offer, so get your money ready (especially your Allowance and Christmas money) and come to the auction prepared to spend it all...



WIN THIS PAINTING!



Mathews-built deckboat Peggy of New Point is turning 100!

The Mathews Maritime Foundation is raffling off this beautiful painting of the Peggy by John Barber.

Tickets can be purchased at www.mathewsmaritime.com. All proceeds benefit the Peggy of New Point Endowment Fund. Drawing will be held 9/20/25. Winner need not be present to win.



The prize, "The Peggy Off New Point Comfort" by John M. Barber, is an original oil painting on linen canvas, measuring 10 x 18".

It is fitted with a museum quality, custom-made frame, overall measurements of 18 x 26". The frame bears a hand-lettered nameplate and painting light. Value \$8,000

**TICKETS: \$25 EACH OR
5 FOR \$100**

**PURCHASE TICKETS AT
WWW.MATHEWSMARITIME.COM**



The Deckplate

JANUARY 2025

11 HRSMS Monthly Meeting: Mariners' Museum
Nomination of officers
Presentation:

FEBRUARY 2025

8 HRSMS Monthly Meeting: Mariners' Museum
7 National Fettuccine Alfredo Day
Election of officers
Presentation: "Let's take it from the bottom; Building the iconic Chesapeake Bay workboat, a lesson in skill and tradition."

MARCH 2025

8 HRSMS Monthly Meeting: Mariners' Museum
14 π Day
9/10 Battle of Hampton Roads Weekend at the MM
Presentation: Auction

April 2025

12 HRSMS Monthly Meeting: Mariners' Museum
22 Earth Day / 26 Arbor Day
26 Model Boat Show, Deltaville
Presentation:

MAY 2025

10 HRSMS Monthly Meeting: Mariners' Museum
21 Talk like Yoda Day
Presentation: Dave Chelmow...TBD

JUNE 2025

14 HRSMS Monthly Meeting: Mariners' Museum
22 Sips and Trips at the Museum
Presentation:

JULY 2025

12 HRSMS Monthly Meeting: Mariners' Museum
Presentation:

AUGUST 2025

9 HRSMS Monthly meeting:
Presentation:
28 National Bow Tie Day

SEPTEMBER 2025

13 HRSMS Monthly Meeting: Picnic Newport News City Park
19 Talk like a Pirate Day
Presentation: Picnic

OCTOBER 2025

11 HRSMS Monthly Meeting: Mariners' Museum
Presentation: Dave Chelmow...TBD

NOVEMBER 2025

8 HRSMS Monthly Meeting: Mariners' Museum
Presentation: Charles Landrum...TBD

DECEMBER 2025

13 HRSMS Monthly Meeting: Mariners' Museum
Presentation:

WATCH, QUARTER, AND STATION BILL



Skipper: Gene Berger (757) 850-4407
1st Mate: Greg Harrington (757) 218-5368
Purser: Ryland Craze (804) 739-8804
Clerk: Stewart Winn (757) 850-4407
Historian: Tim Wood (757) 639-4442
Logbook Ed.: John Cheevers (757) 876-7466
Columnists: Ron Lewis
Bob Moritz
Tim Wood
Webmaster: Greg Harrington (757) 218-5368
Photographer: John Cheevers (757) 876-7466



Visit us at our webpage:

WWW.HRSMS.ORG. You'll be glad you did!